

JVC®

The Perfect Experience / —

42-inch Native HD Slim LCD Monitor

GD-42X1



Professional features •

- Various picture pre-setting mode
- Monitor calibration (gamma and white balance) software available
- RS-232C control

High performance features •

- Native HD 1920 x 1080 pixels resolution
- 4000 : 1 high contrast ratio
- Wide colour spaces: sRGB 100% / Adobe RGB 96% coverage
- 12-bit per colour processor: xRGB = 36bit
- Individual gamma curve adjustment prior to shipping
- HDMI (V.1.3, with Deep colour , with x.v.Colour)
- 52 manual picture adjustment properties
- Slim depth: 42.5 mm
- Lightweight: 12 kg (without speaker and stand)
- VESA mounting holes

Features

JVC

Professional features

Picture pre-set modes

JVC offers various recommended pre-set picture modes to suit your application.

Signage: This pre-set enables brighter pictures and sharper text, making it suitable for digital signage solutions.

CCTV HD / CCTV SD: Choose this setting for vivid pictures, ideal for CCTV monitoring. CCTV SD mode is set with enhanced darks and pulled-up sharpness compared with CCTV HD mode, to make it suitable for analogue cameras.

Photo Pro: Pre-set featuring sRGB colour space to make it suitable for watching still pictures from SLR digital cameras.

Option: Pre-set gamma curve to make it suitable for displaying medical images including x-ray pictures.¹⁾

Standard: JVC's standard setting for professional

Menu	Mode	Application image
Preset	Signage	Digital signage
	CCTV HD	Security monitoring for HD source
	CCTV SD	Security monitoring for analogue source
	Photo Pro	Viewing photographs
	Option	Displaying medical images ¹⁾
	Standard	Standard monitor
Colour Temperature	Mode-1	Special usages in television studios (3200K ²⁾)
	Mode-2	Digital signage (11,000K ²⁾)
	Mode-3	Security (9300K)
	Mode-4	Displaying medical images ¹⁾ (8000K ²⁾)
	Mode-5	Standard monitor (6500K)
Gamma	Mode-1	Standard setting (γ2.2)
	Mode-2	Printing image (γ1.8 ²⁾)
	Mode-3	CRT image (γ2.4 ²⁾)
	Mode-4	Digital cinema (γ2.6 ²⁾)
	Mode-5	Displaying medical images ^{1)*3)}
	Mode-6	Security (γ2.2+ ²⁾)

¹⁾: This setting is only for approximate presentation and does not confirm to any official standard of medical imaging.

²⁾: Simulated value. Approximate adjustment.

³⁾: Conform to GSDF

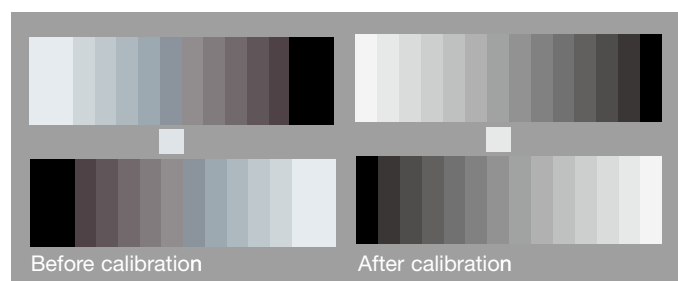
High quality pictures

Wide colour gamut and Adobe RGB compatibility

The GD-42X1's wider colour gamut ensures that digital still photographs taken using sRGB or Adobe RGB colour space will be faithfully reproduced. Depending on the source signal — video or stills — the user can select a colour mode from Wide (the LCD's colour space), Normal (ITU-R BT.709, HDTV standards), x.v.Colour (xvYCC extended gamut), sRGB (same primaries as HDTV) and Adobe RGB, with the latter two designed especially for viewing digital still images.

Individual gamma curve adjustment prior to shipping

By calibrating each unit's gamma to gamma 2.2 before the unit is shipped, JVC is able to ensure extremely precise greyscale characteristics.



52 On-screen image-quality adjustment properties

To achieve the best colour reproduction for any source, the GD-42X1 features 52 on-screen image-quality adjustment properties that allow fine-tuning of colour, tint, gamma and more.



JVC picture engine

The JVC picture engine accurately reproduces natural colours and clear pictures. Several ON/OFF selectable on-screen functions are available to support installation depends on application.

Real bit driver

A 12-bit per colour (xRGB =36 bit) processor up-converts 8-bit signals into 12-bit deep colour signals to ensure smoother gradation regardless of the quality of the original source signals. This function works with video and PC signals.

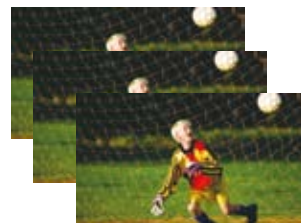
* The quantity of bits will vary depending on the source.



Vivid colours and rich contrast realised.

Noise reduction

Effectively reduces noise without motion blur by detecting picture noise in each of the 16 frequency areas in real-time. It also adjusts the amount of noise reduction as required without adversely affecting the original picture. This function works with still and moving pictures, video and PC signals.



3D NR processing available even for pictures with rapid motion.

Colour management

This original algorithm naturally increases visual sensitivity for colours in areas of an object that viewers focus on. It analyses the colour distribution in each frame of the input signal in real-time, performing high level processing for those areas. It create images with vividly realistic colours and textures, as well as more presence. This function works with video and PC signals.

100Hz/120Hz anti-blurring technology

Significantly reduces motion blur in moving pictures with rapid motion by utilising a high-precision interpolation algorithm to double the frame rate. A real time, motion-estimated Hadamard 3D noise reduction system is also used to eliminate noise, while maintaining the realism and sharpness of the original picture for both 50Hz and 60Hz signals.

42-inch 1920x1080 Native HD Slim LCD Monitor

GD-42X1



Specifications

Model		GD-42X1
Type	Native HD Slim LCD Monitor	
Screen Size	42-inch	
Cabinet Colour	Black & Silver	
LCD Panel	TFT Active Matrix	
Aspect Ratio	16:9	
Resolution	1920 x 1080	
Display Colour	1.07 billion	
Brightness	450 cd/m ²	
Contrast Ratio	4000:1	
Response Time	5.5 ms (G to G)	
Viewing Angle	Horizontal	178°
	Vertical	178°
Speaker	10W+10W (Removable)	
Input Terminals	HDMI	3
	RGB	1
	Component	Yes (shared by D-sub 15)
	Composite	Yes (shared by D-sub 15)
	Audio	3.5 mm Stereo
External Control	RS-232C	Yes
Aspect Mode	SD	AUTO/Panoramic/16:9 Zoom/14:9 Zoom/ Full/Regular/16:9 Zoom Subtitle
	HD	Panorama Zoom/Full/Slim/Full Native
	PC	JUST/Full/1 : 1
	Table Top Stand	Yes
VESA	400 mm x 200 mm	
Operating Temperature	0°C to 40°C / 32°F to 104°F (Humidity 20%-80%)	
Storage Temperature	-20°C to 60°C / -4°F to 140°F	
Power Requirements	AC 100-240 V	
Frequency	50 Hz/60 Hz	
Dimensions (W x H x D)	With Stand	990 x 716.8 x 170 mm / 39 x 28-1/4 x 6-3/4 inch
	Without Speaker and Stand	990 x 599.8 x 42.5 mm / 39 x 23-5/8 x 1-3/4 inch
Weight	With Stand	17.8 kg / 39.2 lbs
	Without Speaker and Stand	12 kg / 26.4 lbs
Accessories	AC power cord, Remote control, Video cable, Audio cable, Speaker unit	

Adobe RGB compatible Native HD monitor with a greater gamut of colours

Professional features

- Various picture pre-setting mode
- Monitor calibration (gamma and white balance) software available
- RS-232C control

Precise picture quality

- Native HD 1920 x 1080 pixels resolution
- 4000:1 high contrast ratio
- Wide colour spaces: sRGB 100% / Adobe RGB 96% coverage
- 12-bit per colour processor: xRGB = 36 bit
- Individual gamma curve adjusted prior to shipping

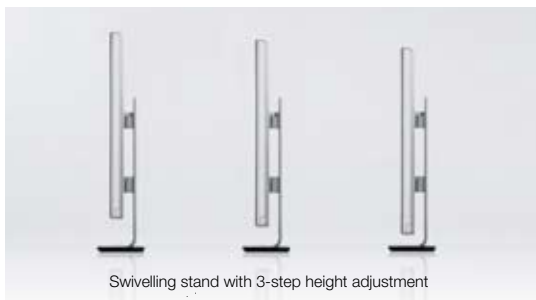
Functional

- 52 manual picture adjustment properties
- HDMI (V.1.3, with Deep colour, with x.v.Colour)
- D-sub 15-pin L/R (mini jack)
- Component and composite (shared with D-sub 15-pin)

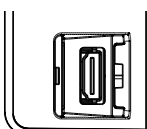
Easy installation

- Slim depth: 42.5 mm
- Lightweight: 12 kg (without speaker and stand)
- Swivelling stand with 3-step height adjustment
- VESA mounting holes
- Removable speaker
- Multi power supply: 100-240 V, 50/60 Hz

Swivelling stand



Terminals



Video and audio terminals



INPUT TERMINALS

HDMI

RGB

Audio

CONTROLS

RS-232C

Remote control

FUNCTIONS

Native HD 1920 x 1080

High contrast 4000 :1

sRGB 100%, Adobe RGB 96% coverage

52 manual picture adjustment

Gamma calibration

Various picture pre-setting mode

INSTALLATION

Swivelling stand

Thin depth (43mm)

Light weight (12Kg)

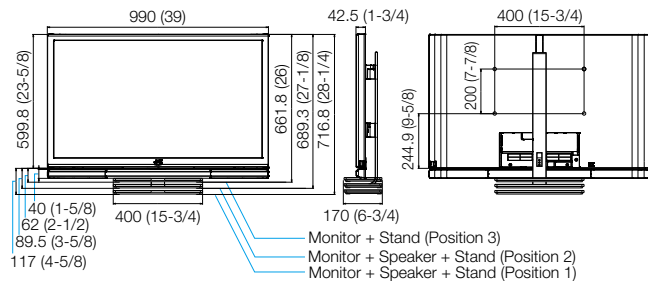
Speaker (removable)

VESA

OPERATION

Power AC

Dimensions



Signal Format

Composite	Component	HDMI-HDMI	RGB
Signal	Signal	Signal	Signal
PAL/50	480/60i	VGA 60	640x400 56.42Hz
PAL/60	576/50i	480/60p	VGA 60
SECAM	480/60p	720/60p	VGA 72
NTSC3.58	576/50p	1080/60i	VGA 75
NTSC4.43	720/60p	480/60i	WVGA 60
PAL M	720/50p	1080/60p	SVGA 60
PAL N	1080/60i	576/50p	SVGA 72
	1080/50i	720/50p	SVGA 75
	1080/60p	1080/50i	XGA 60
	1080/50p	576/50i	XGA 70
	1080/30p	1080/50p	XGA 75
	1080/24p	1080/24p	WXGA (1280x768)
		1080/25p	WXGA (1360x768)
		1080/30p	WXGA 60 (1366x768)
			SXGA 60 (1280x1024)
			SXGA+ 60 (1400x1050)
			1280x720
			1920x1080

Adobe, and the Adobe logo are either registered trademarks or trademarks of Adobe Systems Incorporated in the United States and/or other countries.
x.v.Colour and x.v.Colour logo are registered trademarks or trademarks of Sony Corporation.
HDMI, the HDMI logo and High-Definition Multimedia Interface are trademarks or registered trademarks of HDMI Licensing LLC.
All other brand or product names may be trademarks and or registered trademarks of their respective owners.
Any rights not expressly granted herein are reserved.



*All pictures are simulated.
E & OE. Design & specifications subject to change without notice.*

Printed in Japan
ICN-0389

"JVC" is the trademark or registered trademark of Victor Company of Japan, Limited.